

HOSPITAL LANDSCAPE LEGEND

- SITE BOUNDARY
- BASEMENT BELOW SHOWN DOTTED
- BUILDING ABOVE SHOWN DOTTED
- + FL 13.60 PROPOSED FINISHED LEVEL
- + FL 13.60 PROPOSED INTERNAL FINISHED FLOOR LEVEL
- + TW 13.60 PROPOSED TOP OF WALL LEVEL
- + EL 13.60 EXISTING LEVEL
- DELINEATION 'RAIL' TO COASTAL UPLAND SWAMP [EEC]
- INSITU SEATING WALL
- PROPOSED BENCH SEATING
- ENTRY POLE LIGHTING
- BOLLARDS/LIGHTING
- BIKE RACKS

PROGRAM

- 01 PROPOSED MAIN PEDESTRIAN ACCESS POINT
- 02 ENTRY PEDESTRIAN PLAZA + FORECOURT
- 03 'GREEN WOODLAND' PEDESTRIAN ACCESS
- 04 CAFE COURTYARD NATIVE LANDSCAPE
- 05 CENTRAL COURTYARD NATIVE SHADE LANDSCAPE
- 06 SOUTHERN ENDEMIC 'GREEN WOODLAND' ENTRY LANDSCAPE
- 07 BIORETENTION/RAIN GARDEN/OSD NATIVE LANDSCAPE
- 08 NORTHERN ENDEMIC NATIVE LANDSCAPE WALKING TRAIL
- 09 HOSPITAL VEHICLE ENTRY DROP OFF/SHORT STAY ZONE
- 10 ROOF TOP/PODIUM COURTYARD
- 11 PASSIVE ACTIVITY + HEALING + CALMING SPACES
- 12 ELEVATED NORTHERN COURTYARDS/TERRACES

MATERIALS

- INSITU CONCRETE PEDESTRIAN ACCESS
- INSITU CONCRETE VEHICLE ACCESS
- PROPOSED BLUESTONE PAVING TO PEDESTRIAN ENTRY, FORECOURT + ENTRY PLAZA
- PROPOSED BLUESTONE SETTS TO FORECOURT VEHICLE ENTRY AND DROP OFF ZONE
- PROPOSED GRAVEL/AGGREGATE AS FINISHED SURFACE
- PERMIABLE FRP DECKING TO PLANTING/RAIN GARDEN AREAS
- PROPOSED HARDWOOD TIMBER DECKING
- COMPACTED DECOMPOSED GRANITE

EXISTING PLANT COMMUNITY ZONES

- EXISTING SYDNEY NORTH EXPOSED SANDSTONE WOODLAND PLANT COMMUNITY
- EXISTING DUFFYS FOREST PLANT COMMUNITY [EEC]
- EXISTING COASTAL SANDSTONE HEATH-MALEE PLANT COMMUNITY
- EXISTING COASTAL UPLAND DAMP HEATH SWAMP PLANT COMMUNITY [EEC]

PLANTING PROPOSED

- PROPOSED COASTAL SANDSTONE HEATH-MALEE MATRIX PLANTING
- BIORETENTION/RAIN GARDEN LANDSCAPE WITH COASTAL UPLAND DAMP HEATH SWAMP MATRIX PLANTING
- PROPOSED INTERNAL HOSPITAL NATIVE LANDSCAPE PLANTING
- PROPOSED SYDNEY NORTH EXPOSED SANDSTONE WOODLAND PLANT COMMUNITY MATRIX PLANTING
- PROPOSED LAWN ZONE WITH DUFFYS FOREST TREE CANOPY PLANTING
- PROPOSED ENDEMIC TREE PLANTING

NOTES

01: STAKING_ All tree staking to comply with City of Sydney requirements and Australian Standards.

02: SOIL PREPARATION_ All imported soil mixes are to conform to AS4419, AS 1289.4, AS 3743, AS4419, AS4454, For at grade planting, mix at least 300mm soil depth to planting areas to allow for finish to design levels or nominated. Imported fill to be clean fill free of extraneous material and weed species. 300mm deep soil mix to be 200mm depth of good quality organic planting mix (A.N.L or approved equivalent) to be imported and combined with 100mm depth A.N.L Greenlife compost or approved equivalent. All soil to be free of weed species and ongoing weed management procedures. Light weight garden soil mixes are to be used for on structure planting. This soil mix is to consist of two light weight mixes: an upper layer (horizon A) of 300mm and a lower layer (horizon B). Material will have the general properties conforming to AS 4419 for a 'natural soil'.

03: SITE PREPARATION_ Existing trees and vegetation to be retained shall be preserved and protected from damage of any sort during the execution of landscape work. Root systems of existing plants must not be disturbed if possible. Any site works adjacent the tree protection zone (TPZ) should be carried out using hand tools. Vehicle access shall not be permitted within [3] metres of any tree. Refer landscape report for more detail.

04: MULCH_ All planting areas to be mulched with a minimum 75mm thick cover of 'Forest Fines' mulch or similar approved. All mulched areas to be thoroughly soaked with water and to be free of all weed species.

05: FERTILISER_ All planting areas to be fertilised with 9 month 'NPK' slow release fertiliser.

06: PLANTING_ Planting holes for plant material should be large enough in size to take root ball with additional space to take back filling of good quality planting mix. Mature heights of proposed planting shown on planting plan show the height possible in ideal conditions. These heights are subject to particular site conditions, possible container environments and intended hedging or pruning for functional requirements such as available planting width, intended access under branches and solar access.

07: IRRIGATION_ Automatic irrigation watering system to be selected for all landscape areas. Install pumps, filters and all other necessary fittings to operate system. Irrigation system to conform with all Water Board, Blacktown Council and Australian Standards [AS]. All irrigation to be in ground drip line system.

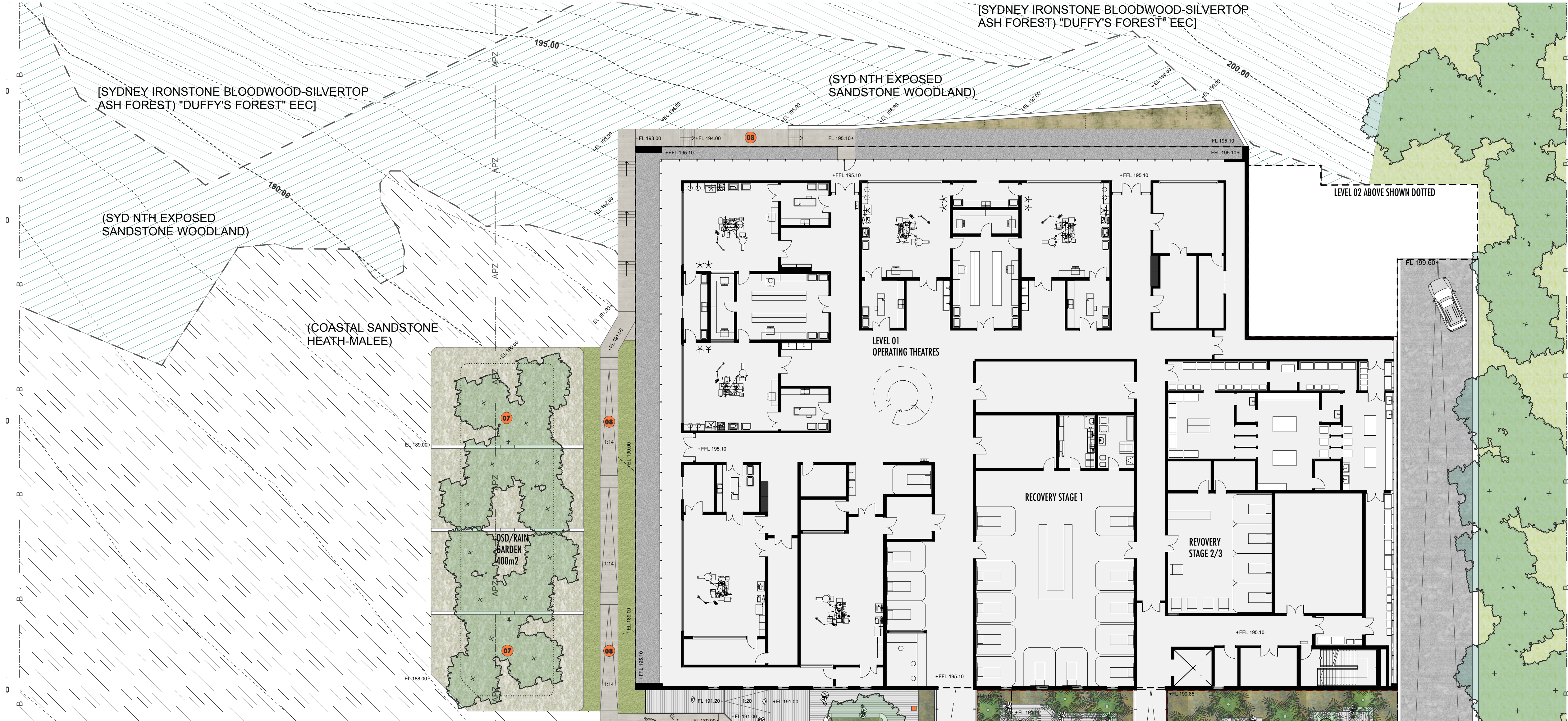
08: MAINTENANCE_ The Landscape Contractor shall maintain the contract site to accepted horticultural practices as well as rectifying any defects during the establishment period. Work shall comply with the following Standards to the extent that they are relevant: SAA H89 Occupational Personal Protection, AS3765 Clothing for protection against hazardous chemicals, AS4373 Pruning of Amenity Trees, AS 3743 Potting mixes, AS 4419 Soils for landscaping and garden use, AS 4454 Composts, soil conditioners and mulches, AS 1289.4 Soil chemical testing, AS/NZS 5667 Water Quality - Sampling. The Landscape Contractor shall maintain the works during the establishment period and make good all defects for a period of Thirteen (13) weeks after the date of practical completion. The period shall commence immediately after the installation of the plant material and continue for the duration specified above. Practical completion of the landscape works shall include but not be limited to the replacement of plants which have failed or been damaged or stolen during work under the contract. Landscape maintenance shall include but not be limited to the following: watering, rubbish removal, spraying and wiping leaf surfaces, relocating failed plants, maintaining mulch, pruning, insect and disease control, cleaning of surrounding areas. Submit a maintenance program for the works prior to commencement. Amend program as required until approved.

09: GENERAL_ All existing and proposed levels to be checked on site and confirmed with builder supervisor/landscape contractor prior to construction commencement. All existing landscape element locations to be checked on site and confirmed with builder supervisor or landscape architect prior to construction commencement. Position of all services on site to be confirmed prior to construction commencement. DRAWINGS PREPARED FOR DEVELOPMENT APPLICATION ONLY. NOT TO BE USED FOR CONSTRUCTION.

NEW PRIVATE HOSPITAL
WYVERN HEALTH

CENTRAL LANDSCAPE PLAN
DEVELOPMENT APPLICATION [NOT FOR CONSTRUCTION] _LOT 02, LAROL ROAD, TERRY HILLS, NSW, AUSTRALIA

SK 04
CARMICHAEL STUDIOS
PO Box 510, Roselle, NSW, 2039, Australia
ph: (02) 9810 0729
mob: 0412175439
email: ruper@carmichaelstudios.com.au
REVISION_G
1:200 @ A1_50% @ A3



HOSPITAL LANDSCAPE LEGEND

- SITE BOUNDARY
- BASEMENT BELOW SHOWN DOTTED
- - - BUILDING ABOVE SHOWN DOTTED
- + FL 13.60 PROPOSED FINISHED LEVEL
- + FFL 13.60 PROPOSED INTERNAL FINISHED FLOOR LEVEL
- + TW 13.60 PROPOSED TOP OF WALL LEVEL
- + EL 13.60 EXISTING LEVEL
- DELINEATION 'RAIL' TO COASTAL UPLAND SWAMP [EEC]
- INSITU SEATING WALL
- PROPOSED BENCH SEATING
- ENTRY POLE LIGHTING
- BOLLARDS/LIGHTING
- BIKE RACKS

PROGRAM

- 01 PROPOSED MAIN PEDESTRIAN ACCESS POINT
- 02 ENTRY PEDESTRIAN PLAZA + FORECOURT
- 03 'GREEN WOODLAND' PEDESTRIAN ACCESS
- 04 CAFE COURTYARD NATIVE LANDSCAPE
- 05 CENTRAL COURTYARD NATIVE SHADE LANDSCAPE
- 06 SOUTHERN ENDEMIC 'GREEN WOODLAND' ENTRY LANDSCAPE
- 07 BIORETENTION/RAIN GARDEN/OSD NATIVE LANDSCAPE
- 08 NORTHERN ENDEMIC NATIVE LANDSCAPE WALKING TRAIL
- 09 HOSPITAL VEHICLE ENTRY DROP OFF/SHORT STAY ZONE
- 10 ROOF TOP/PODIUM COURTYARD
- 11 PASSIVE ACTIVITY + HEALING + CALMING SPACES
- 12 ELEVATED NORTHERN COURTYARDS/TERRACES

MATERIALS

- INSITU CONCRETE PEDESTRIAN ACCESS
- INSITU CONCRETE VEHICLE ACCESS
- PROPOSED BLUESTONE PAVING TO PEDESTRIAN ENTRY, FORECOURT + ENTRY PLAZA
- PROPOSED BLUESTONE SETTS TO FORECOURT
- VEHICLE ENTRY AND DROP OFF ZONE
- PROPOSED GRAVEL/AGGREGATE AS FINISHED SURFACE
- PERMIABLE FRP DECKING TO PLANTING/RAIN GARDEN AREAS
- PROPOSED HARDWOOD TIMBER DECKING
- COMPACTED DECOMPOSED GRANITE

EXISTING PLANT COMMUNITY ZONES

- EXISTING SYDNEY NORTH EXPOSED SANDSTONE WOODLAND PLANT COMMUNITY
- EXISTING DUFFY'S FOREST PLANT COMMUNITY [EEC]
- EXISTING COASTAL SANDSTONE HEATH-MALEE PLANT COMMUNITY
- EXISTING COASTAL UPLAND DAMP HEATH SWAMP PLANT COMMUNITY [EEC]

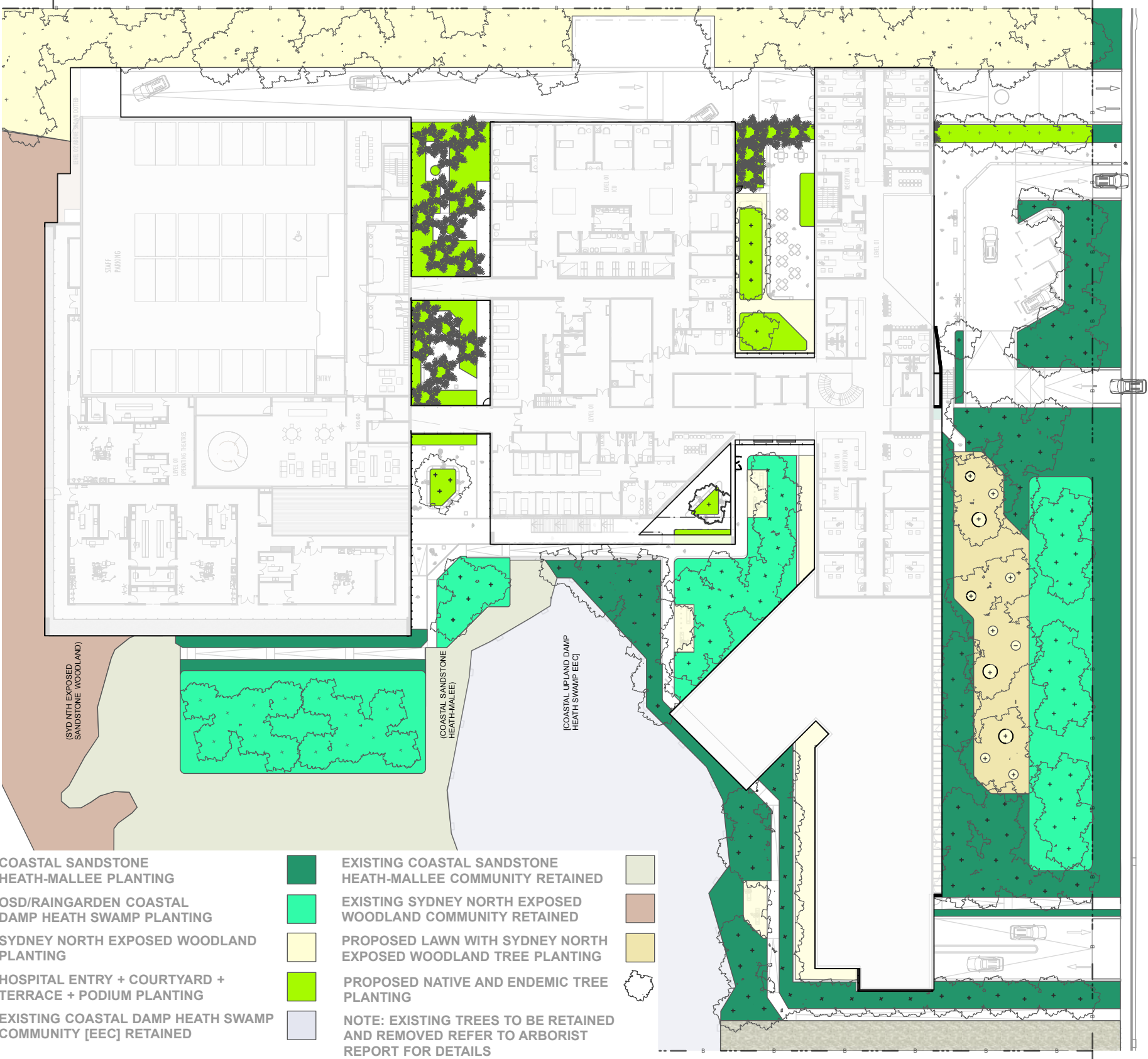
PLANTING PROPOSED

- PROPOSED COASTAL SANDSTONE HEATH-MALEE MATRIX PLANTING
- BIORETENTION/RAIN GARDEN LANDSCAPE WITH COASTAL UPLAND DAMP HEATH SWAMP MATRIX PLANTING
- PROPOSED INTERNAL HOSPITAL NATIVE LANDSCAPE PLANTING
- PROPOSED SYDNEY NORTH EXPOSED SANDSTONE WOODLAND PLANT COMMUNITY MATRIX PLANTING
- PROPOSED LAWN ZONE WITH DUFFY'S FOREST TREE CANOPY PLANTING
- PROPOSED ENDEMIC TREE PLANTING

NOTES

- 01: STAKING_ All tree staking to comply with City Of Sydney requirements and Australian Standards.
- 02: SOIL PREPARATION_ All imported soil mixes are to conform to AS4419, AS 1289.4, AS 3743, AS4419, AS4454. For at grade planting, mix at least 300mm soil depth to planting areas to allow for finish to design levels as nominated. Imported fill to be clean fill free of extraneous material and weed species. 300mm deep soil mix to be 200mm depth of good quality organic planting mix [A.N.I. or approved equivalent] to be imported and combined with 100mm depth A.N.I. Greenline compost or approved equivalent. All soil to be free of weed species and ongoing weed management procedures. Light weight garden soil mixes are to be used for on structure planting. This soil mix is to consist of two light weight mixes: an upper layer (horizon A) of 300mm and a lower layer (horizon B). Material will have the general properties conforming to AS 4419 for a 'natural soil'.
- 03: SITE PREPARATION_ Existing trees and vegetation to be retained shall be preserved and protected from damage of any sort during the execution of landscape work. Root systems of existing plants must not be disturbed if possible. Any site works adjacent the tree protection zone [TPZ] should be carried out using hand tools. Vehicle access shall not be permitted within [3] metres of any tree. Refer to botanical report for more detail.
- 04: MULCH_ All mulched areas to be mulched with a minimum 75mm thick cover of 'Forest Finest' mulch or similar approved. All mulched areas to be thoroughly soaked with water and to be free of all weed species.
- 05: FERTILISER_ All planting areas to be fertilised with 9 month 'NPK' slow release fertiliser.
- 06: PLANTING_ Planting holes for plant material should be large enough in size to take root ball with additional space to take back filling of good quality planting mix. Mature heights of proposed planting shown on planting plan show the height possible in ideal conditions. These heights are subject to particular site conditions, possible container environments and intended hedging or pruning for functional requirements such as available planting width, intended access under branches and solar access.
- 07: IRRIGATION_ Automatic irrigation watering system to be selected for all landscape areas. Install pumps, filters and all other necessary fittings to operate system. Irrigation system to conform with all Water Board, Blacktown Council and Australian Standards [AS]. All irrigation to be in ground dripline system.
- 08: MAINTENANCE_ The Landscape Contractor shall maintain the contract site to accepted horticultural practices as well as rectifying any defects during the establishment period. Work shall comply with the following Standards to the extent that they are relevant: SAA HB9 Occupational Personal Protection, AS3765 Clothing for protection against hazardous chemicals, AS4373 Pruning of Amenity Trees, AS 3743 Potting mixes, AS 4419 Soils for landscaping and garden use, AS 4454 Composts, soil conditioners and mulches, AS 1289.4 Soil chemical testing, AS/NZS 5667 Water Quality - Sampling. The Landscape Contractor shall maintain the works during the establishment period and make good all defects for a period of Thirteen [13] weeks after the date of practical completion. The period shall commence immediately after the installation of the plant material and continue for the duration specified above. Practical completion of the landscape works shall include but not be limited to the replacement of plants which have failed or been damaged or stolen during work under the contract. Landscape maintenance shall include but not be limited to the following: watering, rubbish removal, spraying and wiping leaf surfaces, relocating failed plants, maintaining mulch, pruning, insect and disease control, cleaning of surrounding areas. Submit a maintenance program for the works prior to commencement. Amend program as required until approved.
- 09: GENERAL_ All existing and proposed levels to be checked on site and confirmed with builder supervisor/landscape contractor prior to construction commencement. All existing landscape element locations to be checked on site and confirmed with builder supervisor or landscape architect prior to construction commencement. Position of all services on site to be confirmed prior to construction commencement. DRAWINGS PREPARED FOR DEVELOPMENT APPLICATION ONLY. NOT TO BE USED FOR CONSTRUCTION.

PLANTING DESIGN PLAN



COASTAL SANDSTONE HEATH-MALEE PLANTING		
BOTANICAL NAME	COMMON NAME	ESTIMATED POT SIZE
TREES		
<i>Eucalyptus haemastoma</i>	Scribbly Gum	25L-75L
<i>Angophora hispida</i>	Dwarf Apple	25L-75L
<i>Banksia serrata</i>	Old Man Banksia	25L-75L
<i>Corymbia gummifera</i>	Red Bloodwood	25L-75L
<i>Callitris rhomboidea</i>	Oyster Bay Pine	25L-75L
SHRUBS/FERNS		
<i>Banksia oblongifolia</i>	Dwarf Banksia	tube-150mm
<i>Banksia paludosa</i>	Swamp Banksia	tube-150mm
<i>Banksia ericifolia</i>	Heath Banksia	tube-150mm
<i>Grevillea parviflora</i>	Small-flower Grevillea	tube-150mm
<i>Grevillea speciosa</i>	Red Spider-flower	tube-150mm
<i>Callistemon citrinus</i>	Red Bottlebrush	tube-150mm
<i>Leptospermum grandifolium</i>	Mountain Tea-tree	tube-150mm
<i>Leptospermum squarrosus</i>	Pink Tea-tree	tube-150mm
<i>Hakea teretifolia</i>	Dagger Hakea	tube-150mm
<i>Lambertia formosa</i>	Mountain Devil	tube-150mm
GROUNDCOVERS/GRASSES		
<i>Xanthorrhoea resinosa</i>	Grass tree	relocated
<i>Dampiera stricta</i>	Glasshouse Glory	tube-150mm
<i>Lomandra obliqua</i>	Mat-rush	tube-150mm
<i>Gleichenia dicarpa</i>	Coral Fern	tube-150mm
<i>Epacris microphylla</i>	Coral Heath	tube-150mm
<i>Epacris obtusifolia</i>	Wallum Heath	tube-150mm
<i>Schoenus brevifolius</i>	Zig-zag Bag-rush	tube-150mm

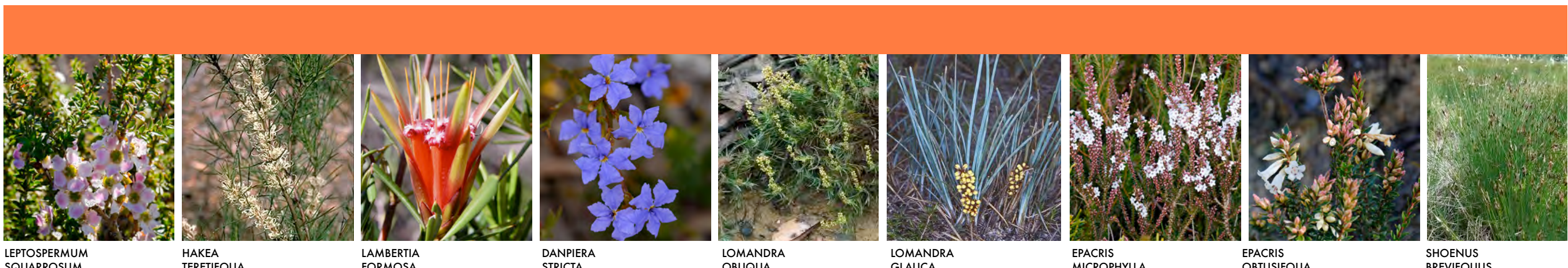
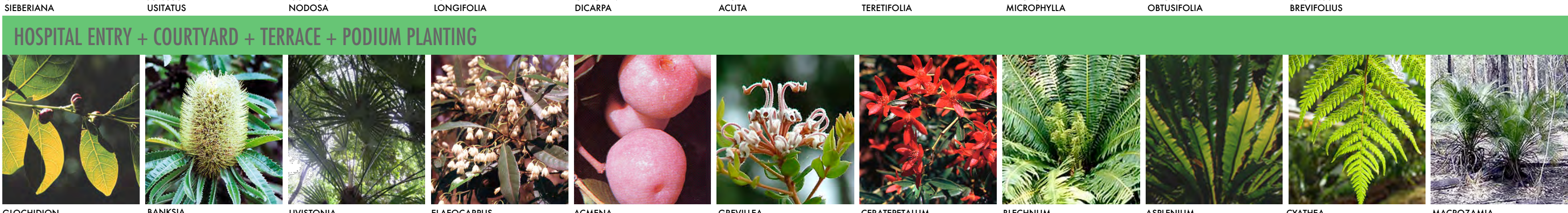
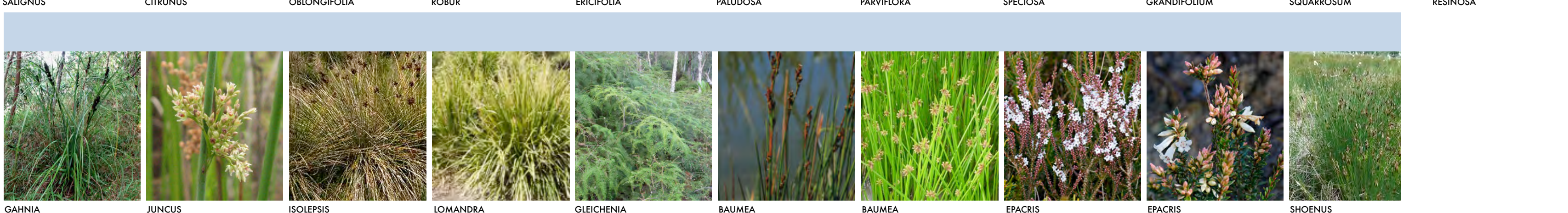
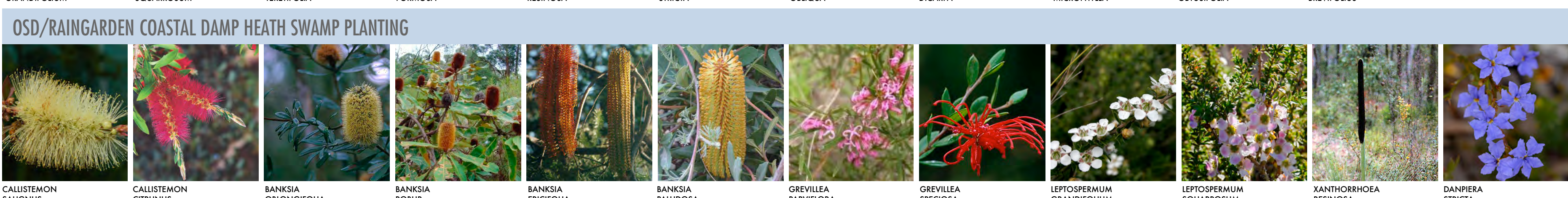
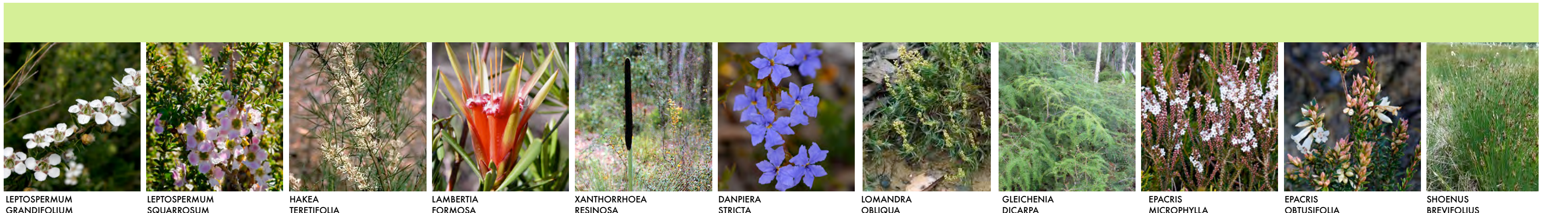
SYDNEY NORTH EXPOSED WOODLAND PLANTING		
BOTANICAL NAME	COMMON NAME	ESTIMATED POT SIZE
TREES		
<i>Eucalyptus haemastoma</i>	Scribbly Gum	25L-75L
<i>Angophora hispida</i>	Dwarf Apple	25L-75L
<i>Banksia serrata</i>	Old Man Banksia	25L-75L
<i>Corymbia gummifera</i>	Red Bloodwood	25L-75L
<i>Corymbia eximia</i>	Yellow Bloodwood	25L-75L
SHRUBS/FERNS		
<i>Baronia ledifolia</i>	Sydney Baronia	tube-150mm
<i>Banksia paludosa</i>	Swamp Banksia	tube-150mm
<i>Banksia ericifolia</i>	Heath Banksia	tube-150mm
<i>Grevillea speciosa</i>	Red Spider-flower	tube-150mm
<i>Grevillea buxifolia</i>	Grey Spider-flower	tube-150mm
<i>Acacia suaveolens</i>	Sweet Wattle	tube-150mm
<i>Leptospermum trinervium</i>	Slender Tea-tree	tube-150mm
<i>Leptospermum squarrosus</i>	Pink Tea-tree	tube-150mm
<i>Patersonia glabrata</i>	Chocolate Lily	tube-150mm
<i>Patersonia pulchella</i>	Chocolate Lily	tube-150mm
<i>Hakea teretifolia</i>	Dagger Hakea	tube-150mm
<i>Lambertia formosa</i>	Mountain Devil	tube-150mm
GROUNDCOVERS/GRASSES		
<i>Dampiera stricta</i>	Glasshouse Glory	tube-150mm
<i>Lomandra obliqua</i>	Mat-rush	tube-150mm
<i>Lomandra glauca</i>	Spiny-Head Mat-Rush	tube-150mm
<i>Epacris microphylla</i>	Coral Heath	tube-150mm
<i>Epacris obtusifolia</i>	Wallum Heath	tube-150mm
<i>Schoenus brevifolius</i>	Zig-zag Bag-rush	tube-150mm

OSD/RAINGARDEN COASTAL DAMP HEATH SWAMP PLANTING		
BOTANICAL NAME	COMMON NAME	ESTIMATED POT SIZE
TREES		
<i>Callistemon salignus</i>	Willow Bottlebrush	25L-75L
SHRUBS		
<i>Banksia oblongifolia</i>	Dwarf Banksia	tube-150mm
<i>Banksia robur</i>	Swamp Banksia	tube-150mm
<i>Banksia paludosa</i>	Swamp Banksia	tube-150mm
<i>Banksia ericifolia</i>	Heath Banksia	tube-150mm
<i>Grevillea parviflora</i>	Small-flower Grevillea	tube-150mm
<i>Grevillea speciosa</i>	Red Spider-flower	tube-150mm
<i>Callistemon citrinus</i>	Red Bottlebrush	tube-150mm
<i>Leptospermum grandifolium</i>	Mountain Tea-tree	tube-150mm
<i>Leptospermum squarrosus</i>	Pink Tea-tree	tube-150mm
GROUNDCOVERS/GRASSES/SEDGES		
<i>Xanthorrhoea resinosa</i>	Grass tree	relocated
<i>Dampiera stricta</i>	Glasshouse Glory	tube-150mm
<i>Gahnia sieberiana</i>	Sword Grass	tube-150mm
<i>Juncus usitatus</i>	Common Rush	tube-150mm
<i>Isolepis nodosa</i>	Club-rush	tube-150mm
<i>Lomandra longifolia</i>	Piny-head Mat-rush	tube-150mm
<i>Gleichenia dicarpa</i>	Coral Fern	tube-150mm
<i>Baumea acuta</i>	Twig Rush	tube-150mm
<i>Baumea teretifolia</i>	Common Twig Rush	tube-150mm
<i>Schoenus brevifolius</i>	Zig-zag Bag-rush	tube-150mm
<i>Epacris microphylla</i>	Coral Heath	tube-150mm
<i>Epacris obtusifolia</i>	Wallum Heath	tube-150mm

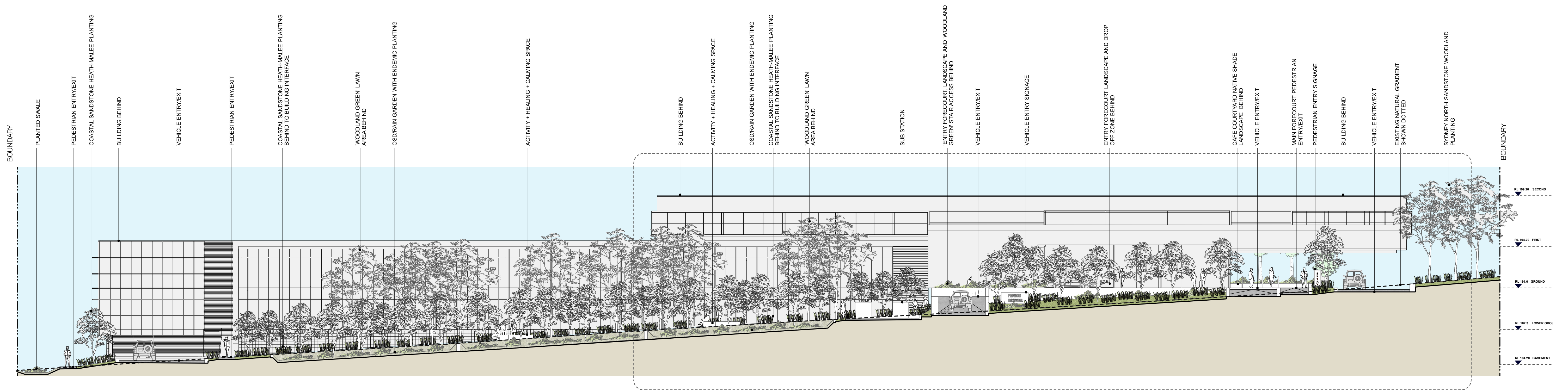
HOSPITAL ENTRY + COURTYARD + TERRACE + PODIUM PLANTING		
BOTANICAL NAME	COMMON NAME	ESTIMATED POT SIZE
TREES		
<i>Banksia serrata</i>	Old Man Banksia	25L-75L
<i>Glochidion ferdinandi</i>	Cheese Tree	25L-75L
<i>Livistonia australis</i>	Cabbage Palm	25L-75L
<i>Elaeocarpus reticulatus</i>	Blueberry Ash	25L-75L
SHRUBS/FERNS		
<i>Acmena smithii</i>	Lilypilly	200mm
<i>Grevillea buxifolia</i>	Grey Spider-flower	200mm
<i>Ceratopetalum gummifera</i>	Christmas Bush	200mm
<i>Macrozamia communis</i>	Burrawang	200mm
<i>Blechnum nudum</i>	Water Fern	200mm
<i>Asplenium australasicum</i>	Birds Nest Fern	200mm
<i>Cordyline stricta</i>	Palm Lily	150mm
<i>Cyathea cooperi</i>	Tree Fern	25L
<i>Doodia aspera</i>	Rasp Fern	150mm
GROUNDCOVERS/GRASSES		
<i>Dianella 'Little Jess'</i>	'Little Jess'	150mm
<i>Dianella 'Silver Streak'</i>	'Silver Streak'	150mm
<i>Lomandra 'Tanika'</i>	Mat-rush 'Tanika'	150mm
<i>Lomandra glauca 'Aussie Blue'</i>	'Aussie Blue'	150mm
<i>Myoporum parvifolium</i>	Creeping Boabialla	150mm
<i>Viola hederacea</i>	Native violet	150mm
CLIMBERS/SCRAMBLERS		
<i>Hibbertia scandens</i>	Guinea Flower	150mm
<i>Hardenbergia violacea</i>	Happy Wanderer	150mm

NEW PRIVATE HOSPITAL
WYVERN HEALTH

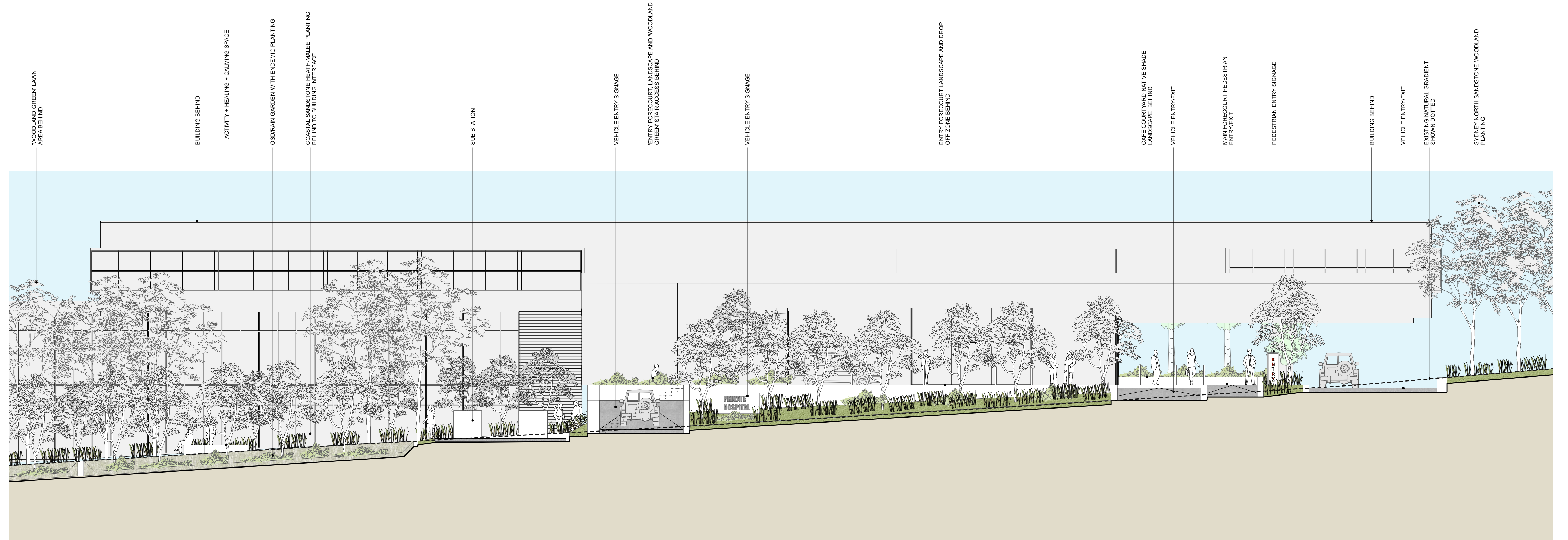
PLANTING SELECTION



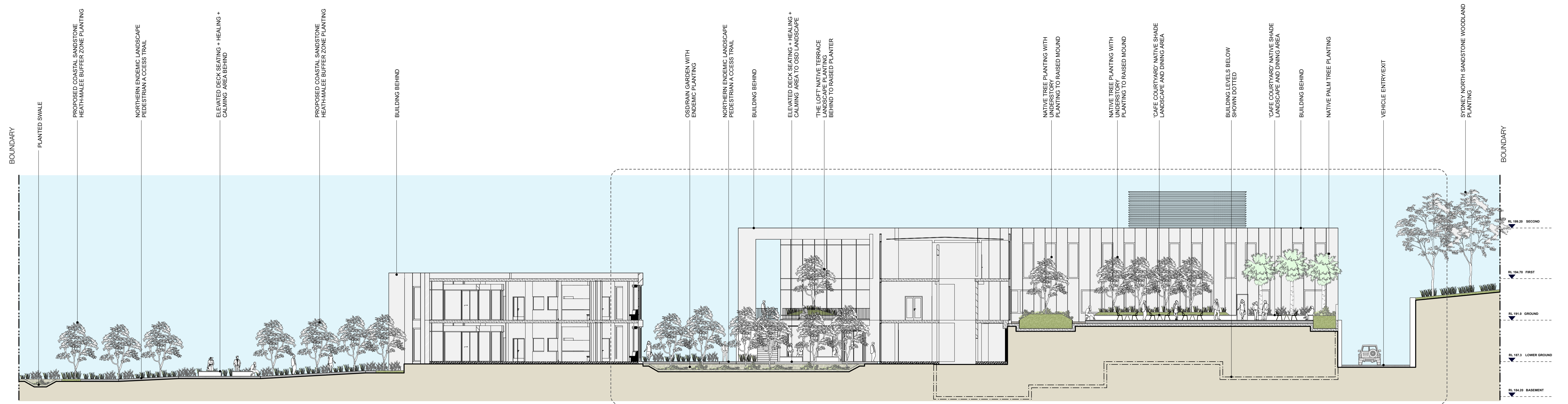
LANDSCAPE PLANTING STRATEGY
DEVELOPMENT APPLICATION [NOT FOR CONSTRUCTION] _LOT 02, LAROOL ROAD, TERRY HILLS, NSW, AUSTRALIA



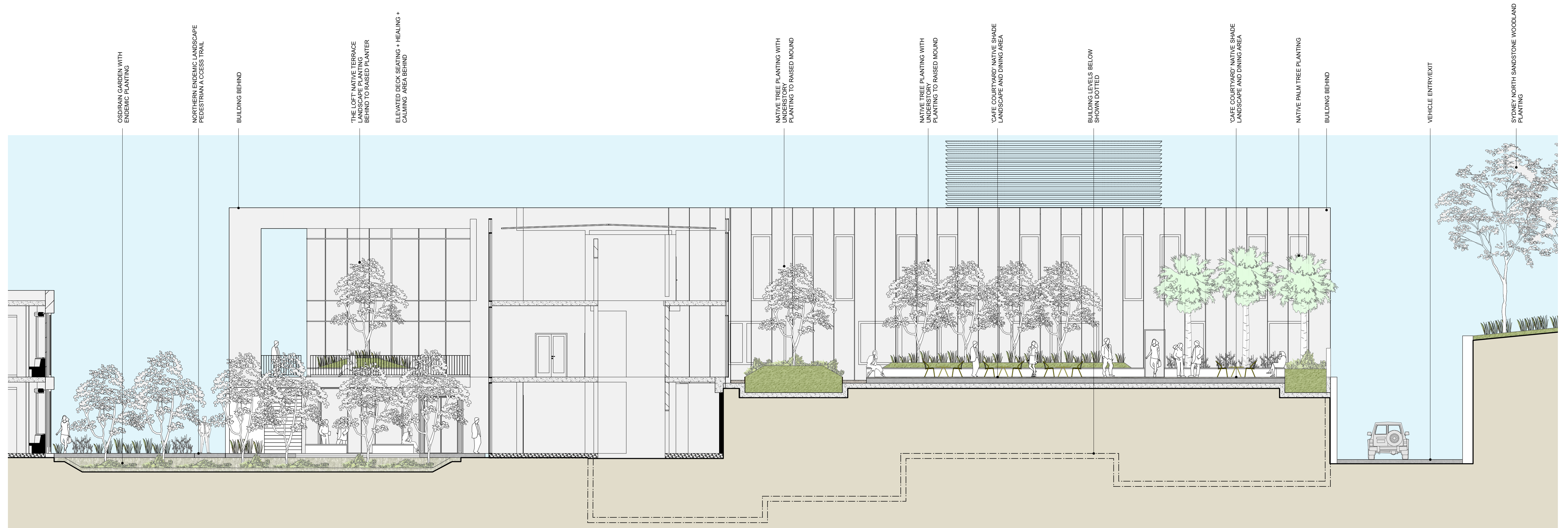
SECTION BB [1:175] 'ENTRY LANDSCAPE'



SECTION BB [1:100] 'ENTRY LANDSCAPE BLOW UP'



SECTION AA [1:175] 'CAFE COURTYARD' LANDSCAPE + 'RAIN GARDEN' + NORTHERN ENDEMIC LANDSCAPE



SECTION AA [1:100] 'CAFE COURTYARD' LANDSCAPE + 'RAIN GARDEN' + NORTHERN ENDEMIC LANDSCAPE BLOW UP